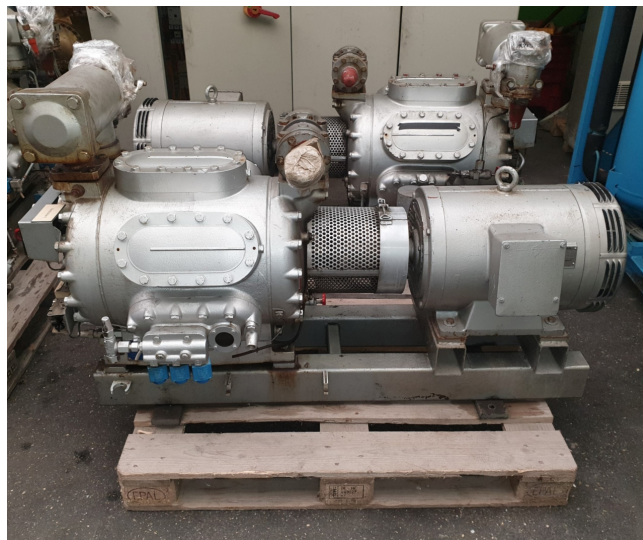


Sabroe CMO 26

Specifications

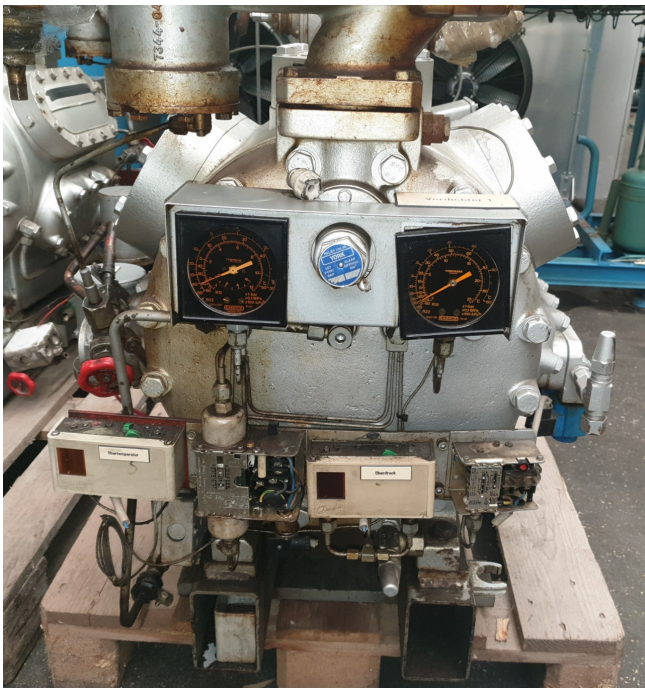
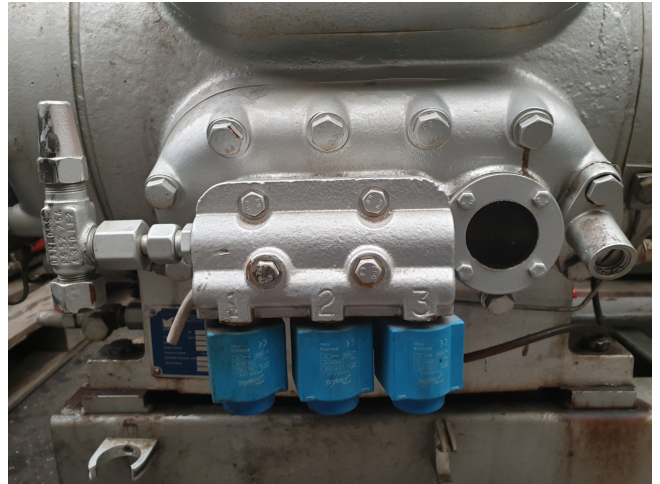
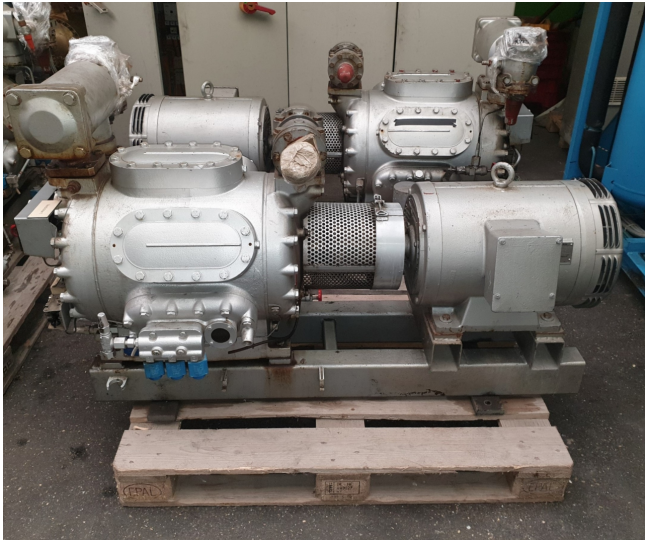
Brand	Sabroe
Type	CMO 26
Refrigerant	Freon
Refrigerant type	R22 or other types
kW at +10°C/+40°C	155,7
kW at 0°C/+40°C	106,1
kW at -5°C/+40°C	86
kW at -10°C/+40°C	68,6
kW at -20°C/+40°C	41,3
kW at -30°C/+40°C	22,1
kW at -40°C/+40°C	9,3
Electromotor Specs	30kW at 1440RPM
Unloaded Start	✓
Capacity Control	✓
On steel base frame	✓
Pressure safety switches	✓
Hp/Lp/Op	
Pressure gauges	✓
Hp/Lp/Op	
Sight Glass	✓
Remarks	Y.O.B 2008
Sizes	1450x650x920 mm (LxWxH)
Stock	1

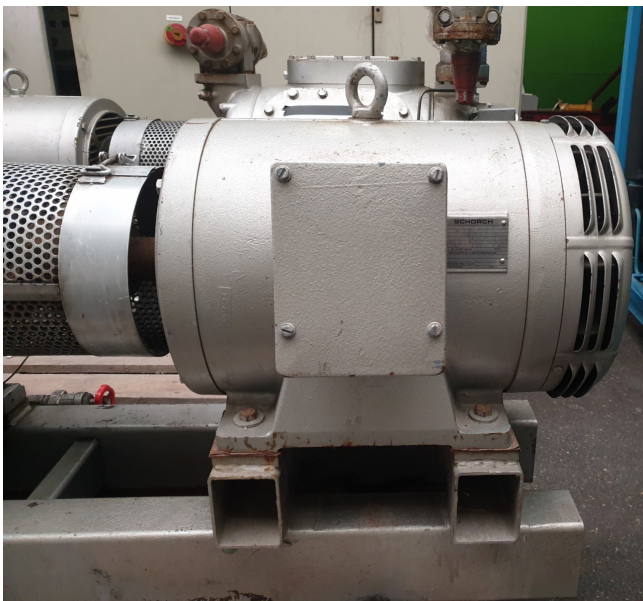
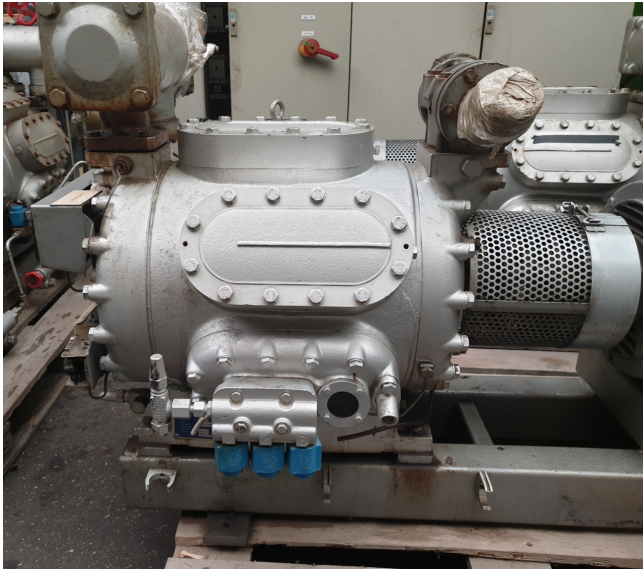


Description

Used Sabroe CMO 26

Used Sabroe CMO 26 single-stage reciprocating compressor with electro motor build by Schorch with 30kW and 1440RPM at 50 *Why choose for HOSBV? Were not only the largest used refrigeration specialist in Europe, but also, we deliver all equipment including an extensive test, warranty and industrial cleaning. *Optional we can also arrange the logistics.





Model	Number of cylinders	Swept volume at 1500 rpm	Swept volume at 1800 rpm	Nominal capacities in kW at 1500 rpm						Dimensions in mm			Weight excluding motor	Sound pressure level at 1500 rpm
				R717						Direct coupled unit				
				Single/high stage		Booster	Single/high stage							
		m³	m³	-140/-10°C	-60/-20°C	-60/-20°C	-10/-35°C	-10/-35°C	L	W	H	kg	dB(A)	
CMO 24	4	97	116	53	85	14	85	54	1400-2150	800	900	480	69	
CMO 26	6	146	175	79	127	21	127	61	1400-2175	800	900	520	71	
CMO 28	8	194	233	105	170	28	169	108	1475-2200	800	900	550	72	
CMO 34	4	113	136	62	100	17	99	63	1400-2150	800	900	480	70	
CMO 36	6	170	204	93	149	25	149	95	1400-2175	800	900	520	72	
CMO 38	8	228	273	123	199	33	198	127	1475-2200	800	900	550	73	

Nominal capacities are based on 1500 rpm and 5K liquid subcooling.
All refrigerants make it possible to operate CMO compressors
at speeds of up to 1800 rpm.
1500 rpm at 50 Hz.
1800 rpm at 60 Hz or VSD.

JRL-0611 01.2015



Your partner for used commercial and
industrial refrigeration equipment
